



Data Collection System for Non-Islamic
Houses of Worship (RIBI) in Penang



RIBI

Non-Islamic Houses of Worship (RIBI)

eRIBI

Data Collection System for RIBI in Penang



	Page
Foreword	4
About eRIBI	6
eRIBI Committee	8
Definition of RIBI	10
Categories of RIBI	11
Categories of non-RIBI	14
e-Directory Registration	16
For Users of e-RIBI System	18

Foreword

Firstly, I would like to congratulate Penang Harmony Corporation (HARMONICO) for successfully pioneering this new initiative; the eRIBI System.

Indeed, the digitalization of the Data Collection System for Non-Islamic Houses of Worship in Penang is not only apt and timely but also in line with the rapid digital transformation of our present era.

This eRIBI system is anticipated to facilitate the connection between the Penang State Government and the non-Islamic communities, as well as to make the management of non-Islamic affairs more systematic and orderly.

The successful launch of this eRIBI System has placed us in a much better position to materialise an inclusive and sustainable mode of governance, specifically in the direction of digitalising services provided by the State Government agencies for the people.

Yang Amat Berhormat Tuan Chow Kon Yeow

Chief Minister of Penang

Penang implements inclusive policy where various religious festivals are celebrated in public, thus creating opportunities for its citizens to learn about various religions.

However, the records of non-Islamic activities are limited and scattered across a few systems. Therefore, eRIBI is introduced to serve as a system that records, plans, and helps manage non-Islamic religious affairs in a more systematic manner.

As such, I would like to encourage all sectors to work with the state government to promote the eRIBI system, so that Penang continue to move towards its goal of becoming a “Smart State”.

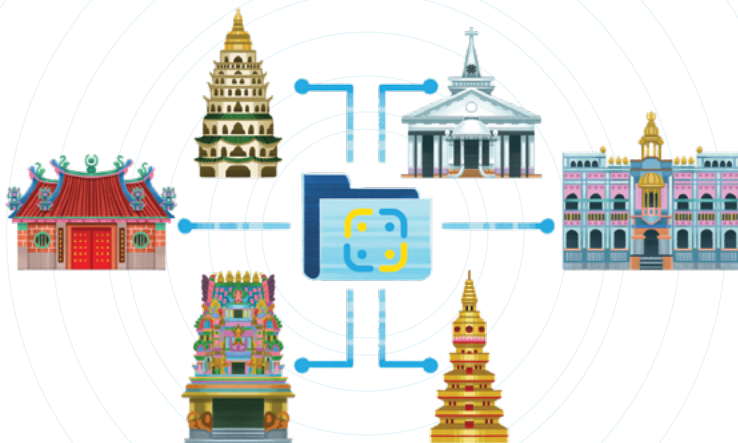
Yang Berhormat Puan Chong Eng

Penang State Executive Councillor (EXCO)
Social Development & Non-Islamic Religious Affairs



About eRIBI

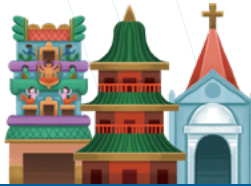
A system that collects data regarding non-Islamic houses of worship (RIBI) in Penang in a holistic, comprehensive, and centralised manner. The launch of the eRIBI system is aligned with the Penang2030 vision - A Family-Focused Green and Smart State that Inspires the Nation.





Penang State Government

- i. Collect and verify records and data of RIBI in Penang;
- ii. Receive and approve applications for allocation through the eRIBI system; and
- iii. Serve as the base of data on RIBI, such as certificate of registration, and records/log of allocations received by the relevant RIBI.



Non-Islamic Houses of Worship

- i. Update data regarding own RIBI in the eRIBI system; and
- ii. Submit applications for allocation through the eRIBI system.



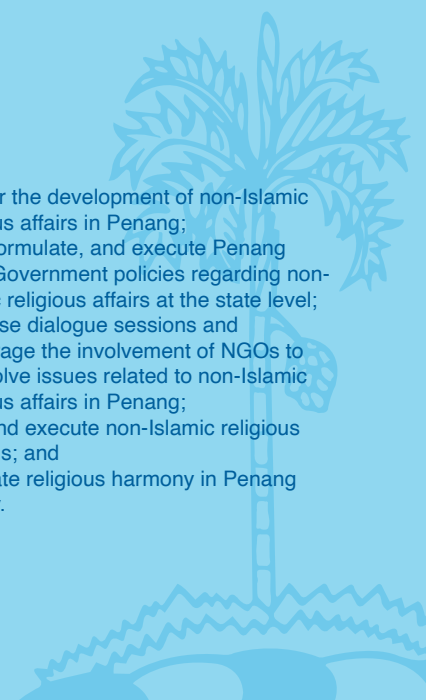
The Public

- i. Browse the RIBI in Penang according to location or religion category; and
- ii. Obtain latest announcements or information regarding non-Islamic religious affairs in Penang through this platform.

eRIBI Committee

Executive Council for Non-Islamic Religious Affairs

The Penang State Government established the Executive Council for Religions other than Islam in 2018, which was later renamed to the Executive Council for Non-Islamic Religious Affairs. The new name aligns with the need for post-pandemic economic recovery and for catalysing progress towards the Penang2030 vision. The Executive Council for Non-Islamic Religious Affairs is currently chaired by Y.B. Chong Eng. The roles and responsibilities of the Executive Council for Non-Islamic Religious Affairs include to:

- 
- i. Monitor the development of non-Islamic religious affairs in Penang;
 - ii. Plan, formulate, and execute Penang State Government policies regarding non-Islamic religious affairs at the state level;
 - iii. Organise dialogue sessions and encourage the involvement of NGOs to help solve issues related to non-Islamic religious affairs in Penang;
 - iv. Plan and execute non-Islamic religious festivals; and
 - v. Facilitate religious harmony in Penang society.

HARMONICO

Penang Harmony Corporation

Penang Harmony Corporation (HARMONICO) was established in March 2021 as an implementing agency to administer non-Islamic religious affairs and to serve as the main driver of strategies or policies formulated under the Penang State Executive Council for Non-Islamic Religious Affairs. HARMONICO aims to instill universal values and spiritual understanding amongst different faith as a foundation to an inclusive and harmonious society. The eRIBI system will be managed by HARMONICO and all information and data in the system are owned by the Penang State Government.



Definition of RIBI

- i. A RIBI is a place where people carry out non-Islamic religious activities.
- ii. Said place is in the form of a building, where believers can carry out prayer ceremonies or hold religious celebrations.
- iii. A RIBI exists to fulfil the spiritual needs of believers. Believers can comfortably conduct religious activities and interact with fellow believers of the same religion.
- iv. A RIBI also serves as a space that allows believers to share the outcomes of their religious studies and religious knowledge with one another.
- v. A RIBI with cultural heritage or architectural value can also attract visitors who are non-believers.
- vi. Such a building needs to be maintained for the next generations.
- vii. Therefore, a RIBI needs to be developed based on real needs in a planned manner.
- viii. The aforementioned aspects are very important to ensure believers can comfortably carry out religious activities, which can help strengthen the spiritual practices of local communities.

Bukan Islam

RELIGION

Categories



Buddhist Temple

Buddhist temples can be traced to a few traditions, namely the Mahayana tradition of Han Chinese origin, the Vajrayana tradition of Tibetan origin, and the Theravada tradition of Sri Lankan origin. A Buddhist temple is a place or area where believers of Buddhism carry out religious activities and study the teachings of Buddha. It is also a dwelling for Sangha and monks, a centre for wedding registration and for free Chinese medicine, a memorial hall, a crematorium, a kindergarten, among other functions.



Taoist Temple

Taoist places of worship are known as “Dao Guan” “道观” in Mandarin and “*Ang Kong Keng*” in Hokkien. “Miao 庙” (temple), “Gong 宫” (palace), “Fu 府” (residence of upper class families), or “Tang 堂” (hall) are also common words used to refer to Taoist places of worship around Malaysia. Taoist places of worship typically have a spacious atrium that is characteristic of traditional Chinese architecture. There are various types and sizes of Taoist temples in Malaysia that are dedicated to different deities.

Siamese Temple



Siamese temples are places where Buddhists of Siamese heritage carry out religious activities. Wat means a Buddhist temple in the Siamese or Thai language. In Malaysia, many believers in the Siamese tradition of Buddhism are Malaysian Siamese, who are recognized as “bumiputera” in Malaysia.

Hindu Temple



Hindu Temples are places of worship for Hindus, or “Sanatana Dharma”. There are many traditions within Hinduism, including the Trimurti (Brahma The Creator, Vishnu The Preserver, and Shiva The Destroyer) tradition, the tradition that follows the 4 classifications, namely Vaishnavism (Vishnu), Shaivism (Shiva), Shaktism (Shakti), Smartism, and many other traditions.

Church



Gurdwara



Churches are places where Christians worship Jesus Christ and study the teachings of Christ. Traditional churches often include the cross in their architectural design, while modern churches incorporate various architectural influences and elements. The architecture of church buildings is also largely influenced by historical factors and the pertinent Christian tradition.

The primary place of worship for the Sikh, Gurdwara means “the door that leads to the guru”. Sikhism is a monotheist religion, believing that there is only one God, the “Waheguru”, and that God does not have, and does not manifest in, a physical form. Sikhism promotes the ideal of equality and the universality of humankind, and that the purpose of life is to escape the cycles of reincarnation.

Categories of non-RIBI



Clan House / Kongsì

Despite having similar functions and appearance as RIBI, these buildings are not intended for religious purposes, but as gathering places or for organizational activities by members or specific groups only, not entire groups of believers or devotees. A clan house or Kongsì is used for meetings among members, worshipping ancestors, and various activities.



Shrine

A shrine is a sacred place dedicated to Buddhist, Taoist, or Hindu deities.



Cemetery or Crematorium

Every cemetery or crematorium has a shrine or a space for prayers. The main function of the shrine or prayer space is for family members to pay respect to the deities that look after the cemetery, especially during the Ching Ming season and death anniversaries.



e-Directory Registration



Basic Information

1. Name (in Malay language)
2. Name (in your native language)
3. Address
4. Federal Constituency
5. State Constituency
6. District
7. Township/ Section

1

Information about RIBI

1. Category
2. Religion

2

Administrative Information

1. Name of Organisation
2. Agency of Registration (e.g. ROS, SSM, Act / Gazette)
3. Registration Number
4. Name of Chairperson / President / Secretary
5. Phone Number of Chairperson / President / Secretary
6. Name of Bank Account Holder
7. Name of Bank
8. Organisation's Bank Account Number

3

Additional Information

4

1. Services / Activities (List)
2. Festivals
3. Background / History
4. Year of Establishment
5. Contact (Phone)
6. Contact (E-mail)
7. Link to Official Website
8. Link to Social Media
9. Deity / Tradition, e.g.:
 - i. Buddhism: Theravada, Mahayana, Vajrayana
 - ii. Taoism: Guan Yin, Da Bo Gong, Jiu Wang Ye
 - iii. Hinduism: Mariamman, Subramaniam, Vishnu, Shiva, Ganesha, Murugan
 - iv. Christianity: Roman Catholic, Anglican, Pentecostal Charismatic, Methodist, Baptist, Brethren, Prebyterian, Lutheran
10. Operating Hours (Day, Start Time, End Time)
11. Public Access (Yes/No)

Information about Land

5

1. Land Ownership
2. Category of Land Use
3. Type of Building
4. State of Building
5. Lot Number

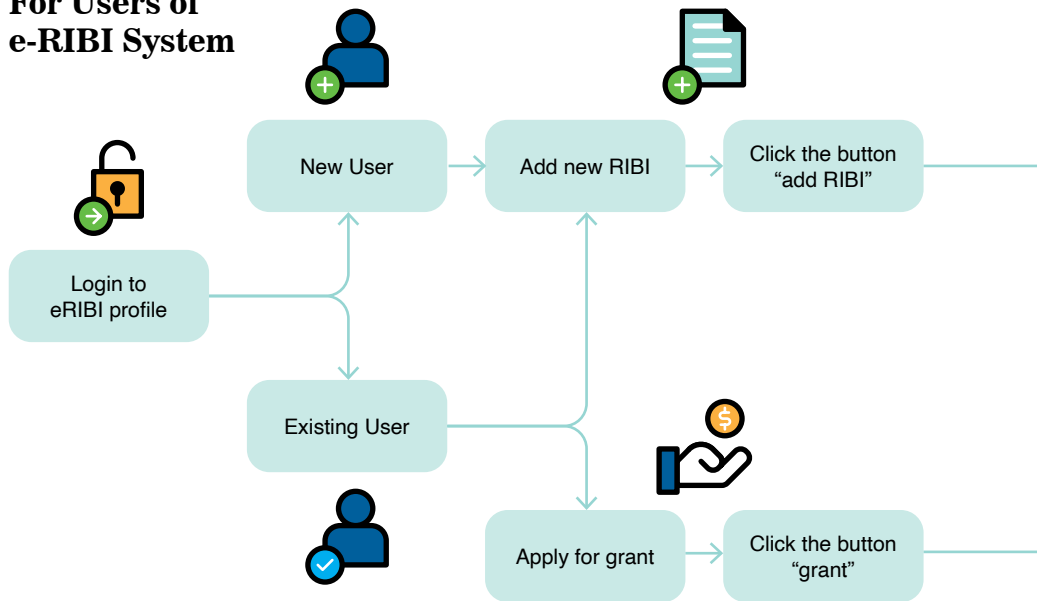
Upload

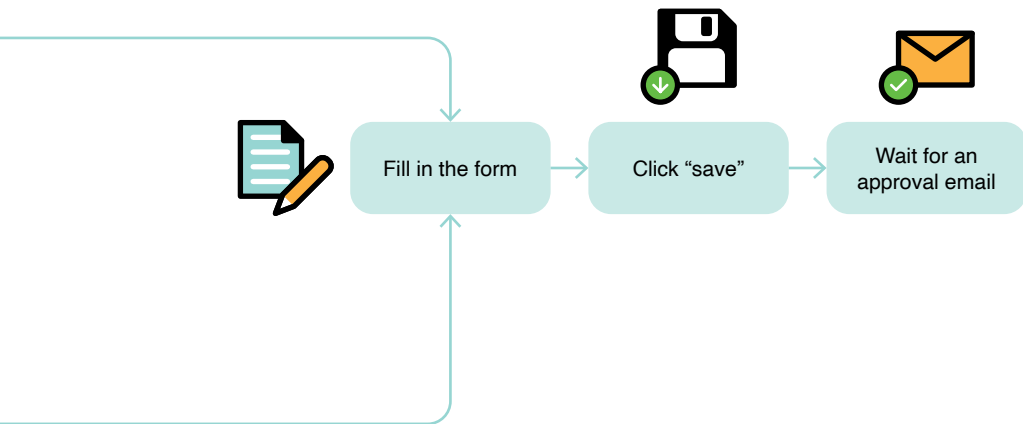
6

1. Front Image of RIBI
2. Image of RIBI
3. Certificate of Registration
4. Copy of Land Tax Receipt



For Users of e-RIBI System







Penang Harmony Centre

No. 15, Jalan Scotland,
10450 George Town,
Pulau Pinang

04 - 226 1582
info@harmonico.my
harmonico.my



eribi.gov.my

